



Developing district-scale silver projects to production

CORPORATE PRESENTATION

MAY 2024



CSE: KUYA | OTCQB: KUYAF | FRA: 6MR1



IMPORTANT NOTICES

This presentation does not constitute an offer to sell or a solicitation of an offer to buy any securities of Kuya Silver Corporation (the "Company"). It does not purport to contain all the information that a prospective investor may require, and it is not intended to provide any legal, tax, or investment advice.

Cautionary Statement on Forward-Looking Information

All statements, other than statements of historical fact, contained or incorporated by reference in this presentation, constitute "forward-looking information" or "forward-looking statements" within the meaning of certain securities laws, and are based on expectations, estimates, and projections as of the date of this presentation. Forward-looking information contained in this presentation includes but is not limited to statements with respect to (a) the Company's ability to obtain funding on favourable terms or at all; (b) anticipated exploration activities and the results of those activities; (c) identification and definition of mineral deposits; (d) the Company's plans in respect of development and operations; (e) schedules and budgets for the Company's development projects; (f) anticipated capital requirements and capital expenditures; (g) estimates and the realization of such estimates; (h) potential mining and processing scenarios; (i) anticipated operating costs, revenues, and cash flow; (j) the timing and amount of estimated future production; and (k) the future price of silver. The words "aim," "anticipate," "assumption," "believe," "budget," "continue," "could," "develop," "enhancement," "estimate," "expand," "expect," "explore," "extend," "goal," "focus," "forecast," "forward," "future," "growth," "guidance," "indicate," "initiative," "intend," "investigate," "may," "must," "objective," "opportunity," "optimize," "option," "outcome," "outlook," "plan," "possible," "potential," "priority," "progress," "project," "prospective," "pursue," "roadmap," "schedule," "seek," "should," "study," "target," "vision," "will," or "would," and variations of those words, and similar words, phrases, or statements indicating that certain actions, events, or results may, could, should, or will be achieved, received, or taken, or will occur, identify forward-looking information.

Forward-looking statements are necessarily based upon various estimates and assumptions that, while considered reasonable by the Company as of the date of such statements, are inherently subject to significant business, economic, and competitive uncertainties and contingencies. The estimates, models, and assumptions of the Company referenced, contained, or incorporated by reference in this presentation, which may prove to be incorrect, include but are not limited to (1) there being no significant disruptions affecting the operations of the Company, whether due to extreme weather events or other natural disasters, labour disruptions, supply disruptions, power disruptions, protests, blockades, damage to equipment, or otherwise; (2) permitting, development, and operations at or in respect of the Company's development projects being consistent with the Company's current expectations, including without limitation the maintenance or modification of existing permits, licenses, consents, authorizations, and approvals (collectively, "Permits") and the timely receipt of all Permits necessary for the development of and commencement of production at the Bethania Silver Project (the "Bethania Project"), and the successful completion of exploration consistent with the Company's expectations at the Company's projects; (3) political and legal developments in any jurisdiction in which the Company operates being consistent with its current expectations, including without limitation the impact of any political developments in the Republic of Peru, and penalties imposed, or actions taken, by any government, including but not limited to amendments or other changes to laws, regulations, rules, and policies relating to mining, environmental protection, water use, labour and employment, safety, customs, and taxation; (4) the completion of studies on the timelines currently expected, and the results of those studies being consistent with the Company's current expectations; (5) the exchange rate between the Canadian dollar and the Peruvian nuevo sol being approximately consistent with current levels; (6) certain price assumptions for silver; (7) prices for diesel, electricity, and other key supplies being approximately consistent with the Company's expectations; (8) the accuracy of the current Mineral Resource estimate of the Company for the Bethania Project; (9) access to capital markets consistent with the Company's expectations, and sufficient to fund the activities of the Company contemplated by this presentation; (10) potential direct or indirect operational impacts resulting from infectious diseases or pandemics such as the ongoing COVID-19 pandemic; and (11) the effectiveness of preventative actions and contingency plans put in place by the Company to respond to the COVID-19 pandemic.

Known and unknown factors could cause actual results to differ materially from those projected in the forward-looking statements. Such factors include, but are not limited to (a) the inaccuracy of any of the foregoing assumptions; (b) the Company's ability to obtain financing; (c) the speculative nature of mineral exploration and development, including but not limited to the risks associated with obtaining and renewing necessary Permits; (d) political or economic developments in Canada, Peru, or other countries in which the Company does business or may do business; (e) the security of personnel and assets; (f) operating or technical difficulties in connection with mining or development activities; (g) changes in legislation, taxation, controls, policies, and regulations; (h) litigation or other claims against, or any regulatory investigations, enforcement actions, administrative orders, or sanctions in respect of, the Company, its directors, officers, or employees, including but not limited to securities class action litigation, environmental litigation, or regulatory proceedings, or any investigations, enforcement actions, or sanctions under any applicable anti-corruption laws; (i) fluctuations in the currency markets, or in the spot or forward price of silver or certain other commodities (such as fuel and electricity); (j) employee relations; (k) contests over title to properties, particularly undeveloped properties; and (l) business opportunities that may be presented to, or pursued by, the Company.

These uncertainties and contingencies may cause the Company's actual results to differ materially from those expressed or implied in any forward-looking statements made by, or on behalf of, the Company. There can be no assurance that forward-looking statements will prove to be accurate, as actual results and future events could differ materially from those anticipated in such statements. Forward-looking statements are provided for the purpose of providing information about management's expectations and plans relating to the future. All of the forward-looking statements made in this presentation are qualified by this cautionary statement and those made in our filings with Canadian securities regulators, including but not limited to the cautionary statements made in the "Risk Analysis" section of our Management's Discussion and Analysis dated April 21, 2023, for the year ended December 31, 2022, and the "Risk Factors" set forth in the Company's Annual Information Form dated April 20, 2022, for the year ended December 31, 2021, both of which are available under the Company's SEDAR profile at www.sedar.com. The factors described in these statements are not intended to represent a complete list of the factors that could affect the Company. The Company disclaims any intention or obligation to update or revise any forward-looking information or to explain any material difference between subsequent actual events and such forward-looking information, except to the extent required by applicable law.

Amended and Restated Preliminary Economic Assessment for the Bethania Project

The Amended and Restated Preliminary Economic Assessment on the Bethania Project (the "Amended Bethania PEA") was conducted by, and the related technical report titled "Bethania Silver Project – NI 43-101 Technical Report (Amended and Restated Preliminary Economic Assessment prepared for Kuya Silver Corporation), Huancavelica, Peru" (the "Amended Bethania PEA Report"), was prepared by, Mining Plus, with contributions from other consultants.

The Amended Bethania PEA Report was prepared in accordance with the requirements of National Instrument 43-101 – Standards of Disclosure for Mineral Projects ("NI 43-101") and has an effective date of October 20, 2023. The Amended Bethania PEA is based on the Mineral Resource estimate for the Bethania Project as set out in "National Instrument 43-101 Technical Report and Maiden Mineral Resource Estimate on the Bethania Silver Project, Department of Huancavelica, Province of Huancavelica, District of Acobambilla, Peru," a technical report prepared for the Company with an issue date of February 21, 2022, an effective date of January 6, 2022, and an effective date of December 10, 2021 for the Mineral Resource estimate.

The Amended Bethania PEA is preliminary in nature, contains numerous assumptions, and includes Inferred Mineral Resources that are considered too speculative geologically to have the economic considerations applied to them that would enable them to be categorized as Mineral Reserves. There is no certainty that the results of the Amended Bethania PEA will be realized. Mineral Resources are not Mineral Reserves and do not have demonstrated economic viability. There is no assurance that Inferred Mineral Resources will ever be upgraded to Mineral Reserves. In addition, the Mineral Resource estimate could be materially affected by environmental, geotechnical, permitting, legal, title, taxation, socio-political, marketing, and other relevant factors.

The information in this presentation about the Amended Bethania PEA should be read in conjunction with the news release titled "Kuya Silver Announces Filing of Amended and Restated Technical Report" issued on October 23, 2023, and the Amended Bethania PEA Report, both of which are available on the Company's website at www.kuyasilver.com

Definitions

In this presentation, the terms "Mineral Resource," "Inferred Mineral Resource," "Indicated Mineral Resource," "Measured Mineral Resource," "Mineral Reserve," "Probable Mineral Reserve," and "Proven Mineral Reserve" comply with reporting standards in Canada and are made in accordance with NI 43-101 under the guidelines set out in the Canadian Institute of Mining, Metallurgy and Petroleum ("CIM") Standards on Mineral Resources and Mineral Reserves (the "CIM Standards"). These standards differ significantly from the requirements of the United States Securities and Exchange Commission (the "SEC") applicable to domestic United States reporting companies. Accordingly, information included in this presentation that describes the Company's Mineral Resource estimate for the Bethania Project may not be comparable with information made public by United States companies subject to the SEC's reporting and disclosure requirements.

Qualified Persons

The scientific and technical content of this presentation relating to the Bethania Project is based on the Bethania PEA Report, which was prepared by Mr. Edgard Vilela, MAUSIMM (CP), Principal Mining Consultant, Mining Plus, Scott Jobin-Bevans (Ph.D., PMP, P.Geo.), Principal Geoscientist, Caracle Creek International Consulting Inc., Simon James Atticus Mortimer (M.Sc. ACSM, MAUSIMM, MAIG, P.Geo.), Atticus Consulting S.A.C., Donald Hickson, P.Eng., Kohn Crippen Berger collaborator, Laurie Tahija, MMSA-QP, of M3 Engineering and Technology Corporation, and John Woodson, P.Eng., of M3 Engineering and Technology Corporation, each of whom is a Qualified Person as that term is defined in NI 43-101. Each of these Qualified Persons is independent of the Company.

The scientific and technical content of this presentation relating to the Silver Kings Project is based on a technical report titled "NI 43-101 Technical Report for the Silver Kings Project, Ontario, Canada," with an issue date of December 3, 2021 and an effective date of September 5, 2021 (the "Silver Kings Technical Report"), which was prepared for the Company in accordance with NI 43-101 by Alain Carrier, P.Geo., M.Sc. (OGQ No. 281, PGO No. 1719, NAPEG No. L2701) of InnovExplo Inc., who is a Qualified Person as that term is defined in NI 43-101. Mr. Carrier is independent of the Company. Information in this presentation about the Silver Kings Project should be read in conjunction with the news release titled "Kuya Silver Files NI 43-101 Technical Report for Silver Kings Project" issued on December 3, 2021, and the Silver Kings Technical Report, both of which are available under the Company's SEDAR+ profile at www.sedarplus.ca.

U.S. Dollars

All financial figures in this presentation are stated in United States dollars unless otherwise noted.



KUYA PORTFOLIO: 2 DISTRICT-SCALE SILVER PROJECTS



Silver Kings Project, Northern Ontario, Canada

Property:

~16,000 Ha located in Ontario's most prolific silver mining camp, near the historic mining town of Cobalt, Ontario

Primary Target:

Campbell-Crawford property, Kerr Project area

Development:

Discovery phase

Upcoming Catalysts:

Follow up drilling at Campbell-Crawford and Airgiod
Additional exploration results from regional targets

Bethania Silver Project, Central Peru

Property:

4300 Ha Located in major silver-lead-zinc mining district in Central Peru

Primary Target:

Bethania Silver Mine

Development:

Near - term production

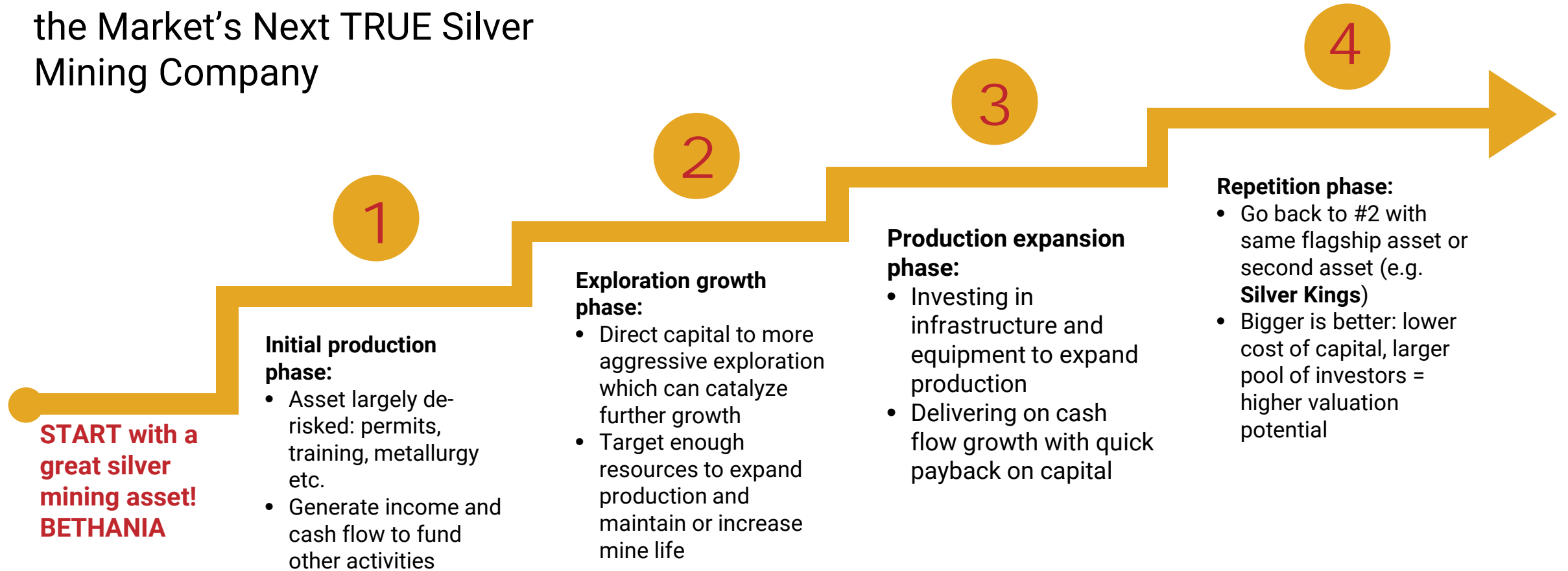
Upcoming Catalysts:

2024 production through toll milling



| PROVEN STRATEGY - JUNIOR TO MID CAP SILVER MINER

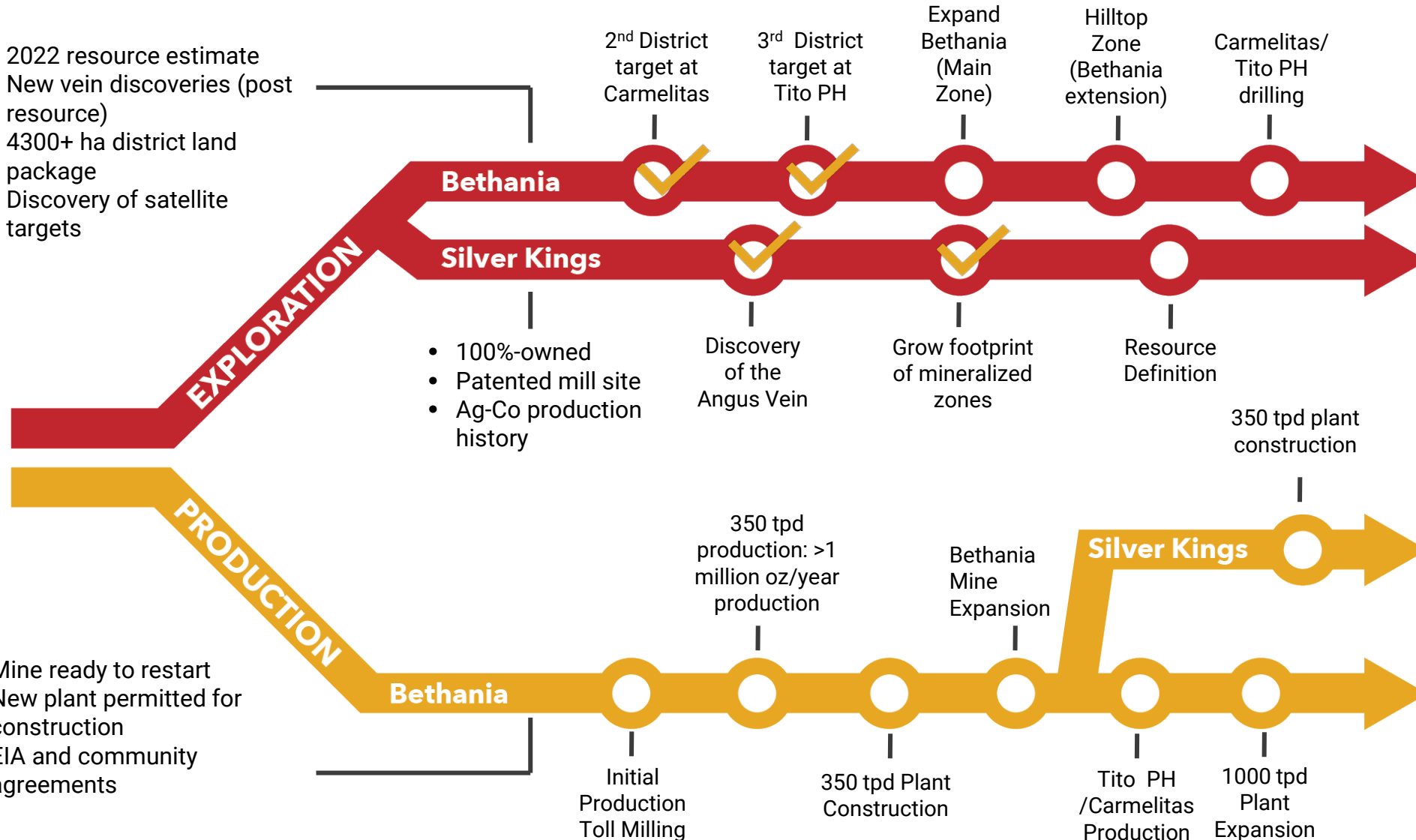
The **Bethania Mine** will Launch the Market's Next TRUE Silver Mining Company

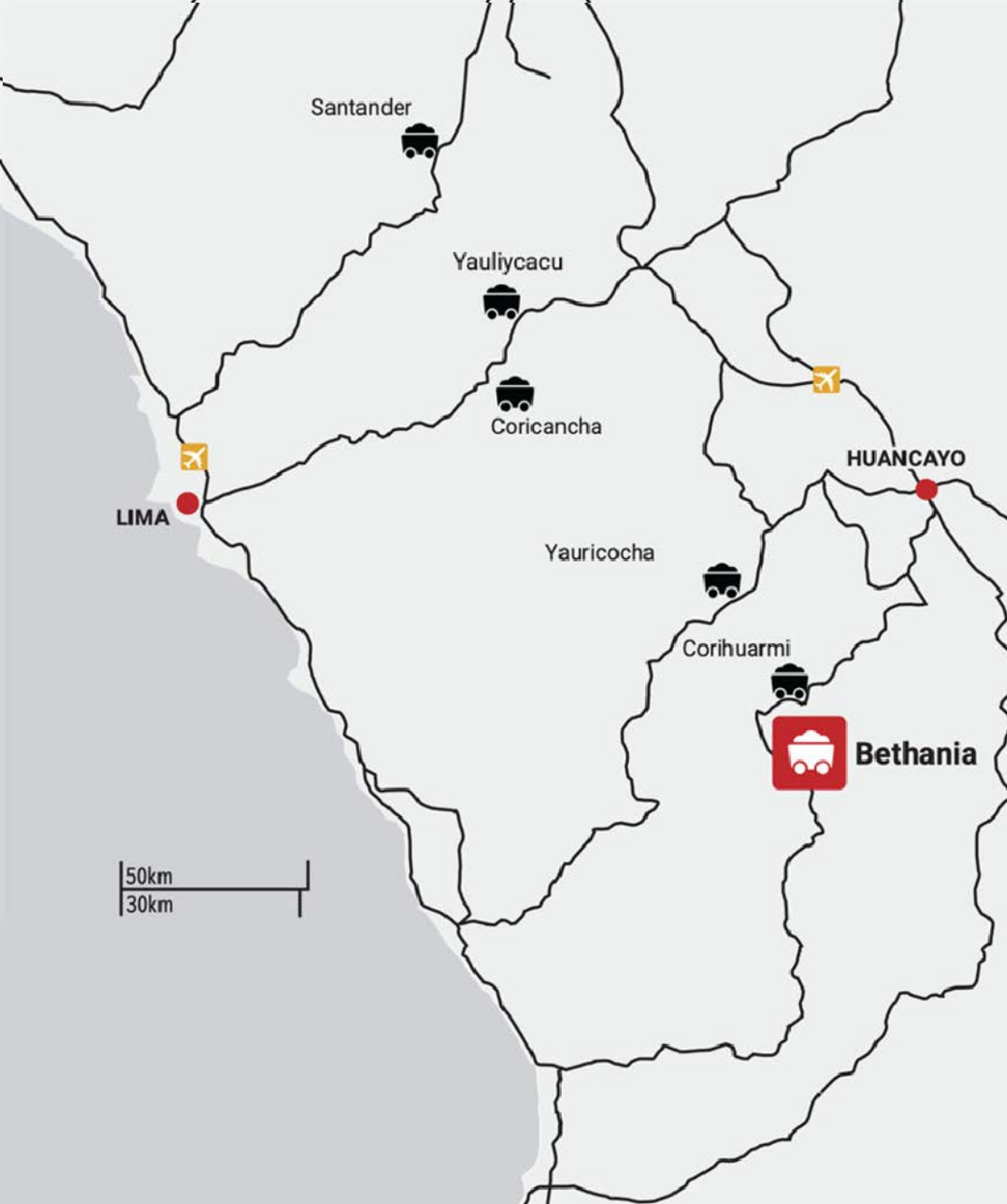




KUYA SILVER: THE DUAL TRACK VALUE CREATION

- 2022 resource estimate
- New vein discoveries (post resource)
- 4300+ ha district land package
- Discovery of satellite targets





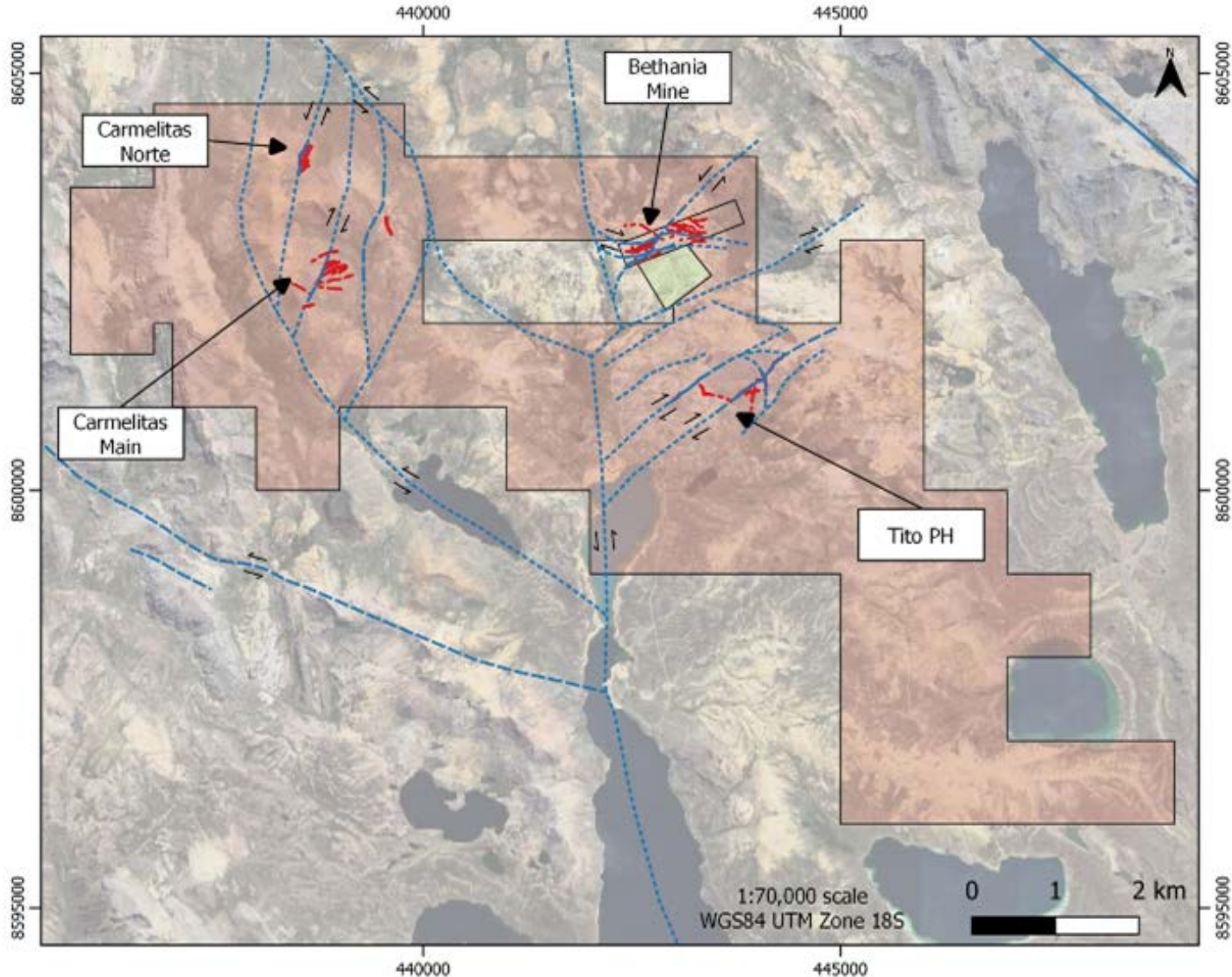
BETHANIA: EXCELLENT ACCESS AND RICH HISTORY

- Located in major silver-lead-zinc mining district in Central Peru
- Access mine by road from Huancayo (major city)
- Daily flights from Lima to Jauja Airport (servicing Huancayo city)
- Mine located near (abandoned) mining village of Bethania
- The Bethania Mine formally opened in 1977 after discovery of two veins (Española and 12 de Mayo) and has been operating at a small scale on and off for 40 years
- Peruvian family acquired Bethania mine, restarted ore production in 2009 and began toll processing in 2013
- Achieved production of 28,788 tonnes in 2014, producing 425,000 oz silver equivalent (only lead and zinc by-products)



BETHANIA: DISTRICT-SCALE POTENTIAL

4,300 Hectare Land Package
Multiple targets



Bethania Mine



Carmelitas

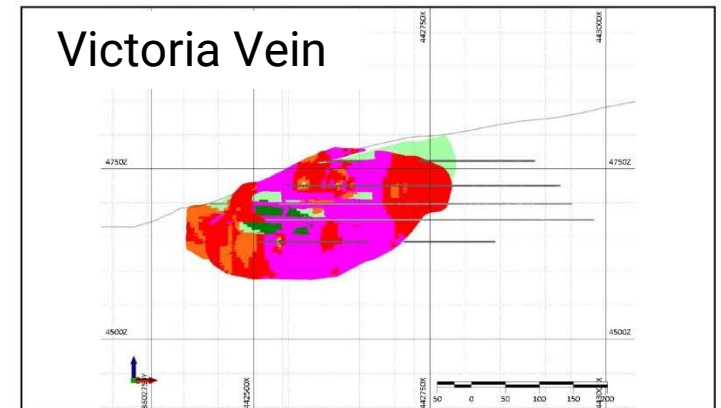
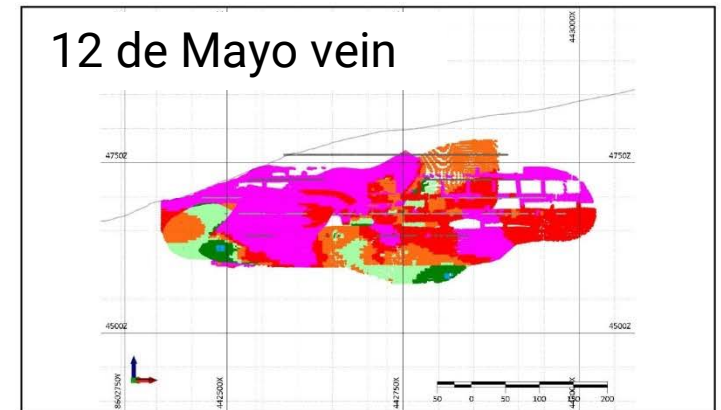
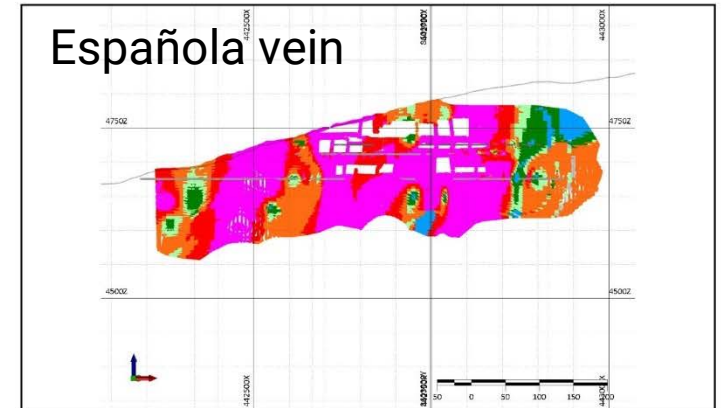
RESOURCE OVERVIEW

Bethania Near Surface Maiden Resource

- Resource Drilling Focused On Shallow Mineralization Proximal to Bethania Mine Workings
- 63%** of Indicated Silver Equivalent Resource Estimate **Located Above** Historical Production Adit (4670 Level)
- The resource estimate consisted of data collected from the 2021 (phase 1) 5,000-metre diamond drilling program as well as previously collected underground rock chip samples.

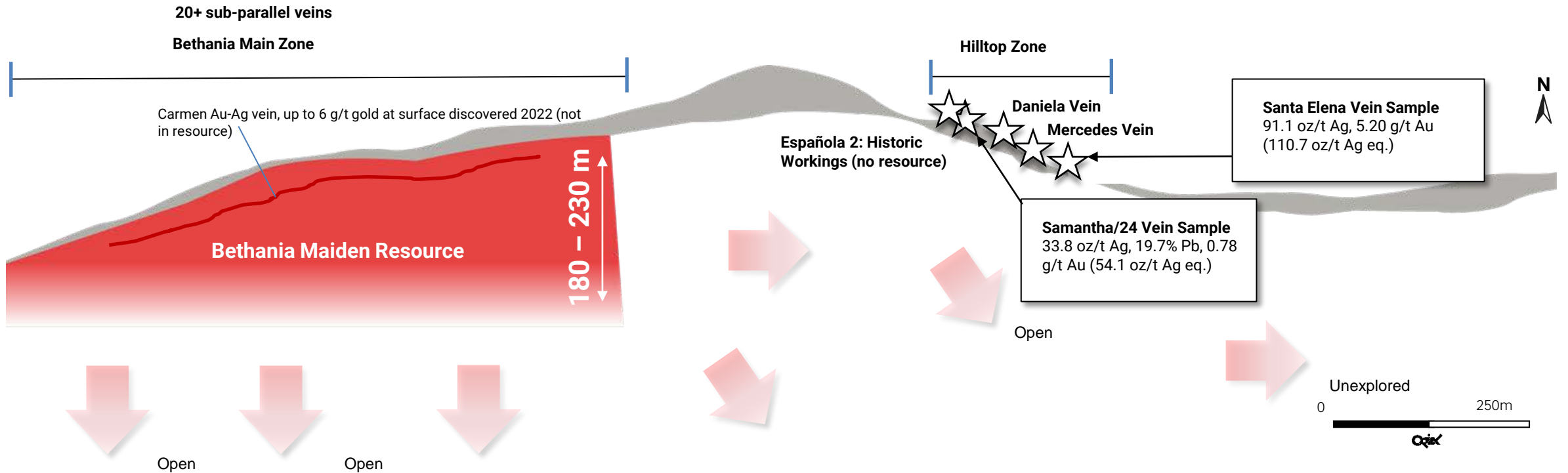
Category	Tonnage	Grade		Contained Metal	
		Ag (g/t)	AgEq (g/t)	Ag (oz)	AgEq (oz)
Indicated	404,000	332	469	4,312,312	6,090,288
Inferred	700,000	249	369	5,603,871	8,303,361

Note: See the Amended and Restated Bethania PEA (October 2023) Report for further details.



BETHANIA: GROWTH POTENTIAL

Bethania Mine Long Section



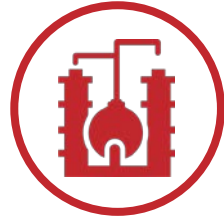
Note: See the Bethania PEA Report and Company press releases for further details on exploration activities.

| BETHANIA: PRODUCTION



DEVELOPMENT

- ✓ In Q4 Kuya completed the 1st tranche strategic investment investment from Trafigura and off take agreements..
- ✓ Kuya completed a C\$3.5M placement in December 2023 and is working towards start of production.
- ✓ In January 2024, Kuya commenced underground reconditioning activities and surface improvements.



PRODUCTION

- Toll Milling to begin with 1000-ton batches ramp up to 350 tpd over 12 months
- Toll milling to commence in H2 2024
- Reconditioning of the Bethania mine workings in preparation for production is progressing with 550 m reconditioned mainly on the 12 de Mayo vein and decline.



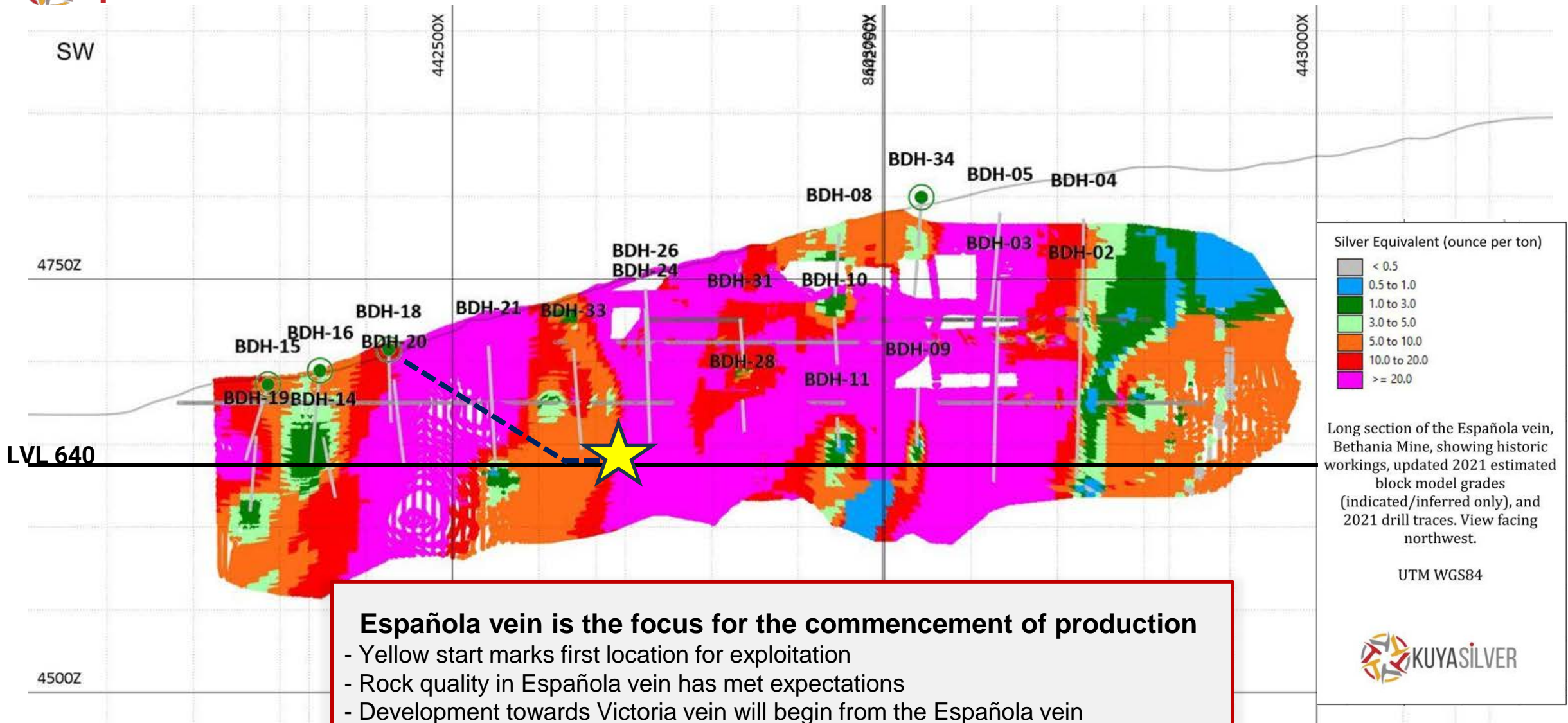
ECONOMICS

- All-in-sustainable cost \$9.85/oz equivalent in PEA (first 18 months)
- Average production (head) grade of 13.8 oz/t (or 429 g/t) silver eq in year 1
- Silver revenue by percentage: 77%
- Silver production of 1.37 Million oz eq in first full year at 350 tpd

Note: See the Amended and Restated Bethania PEA (October 2023) Report for further details.



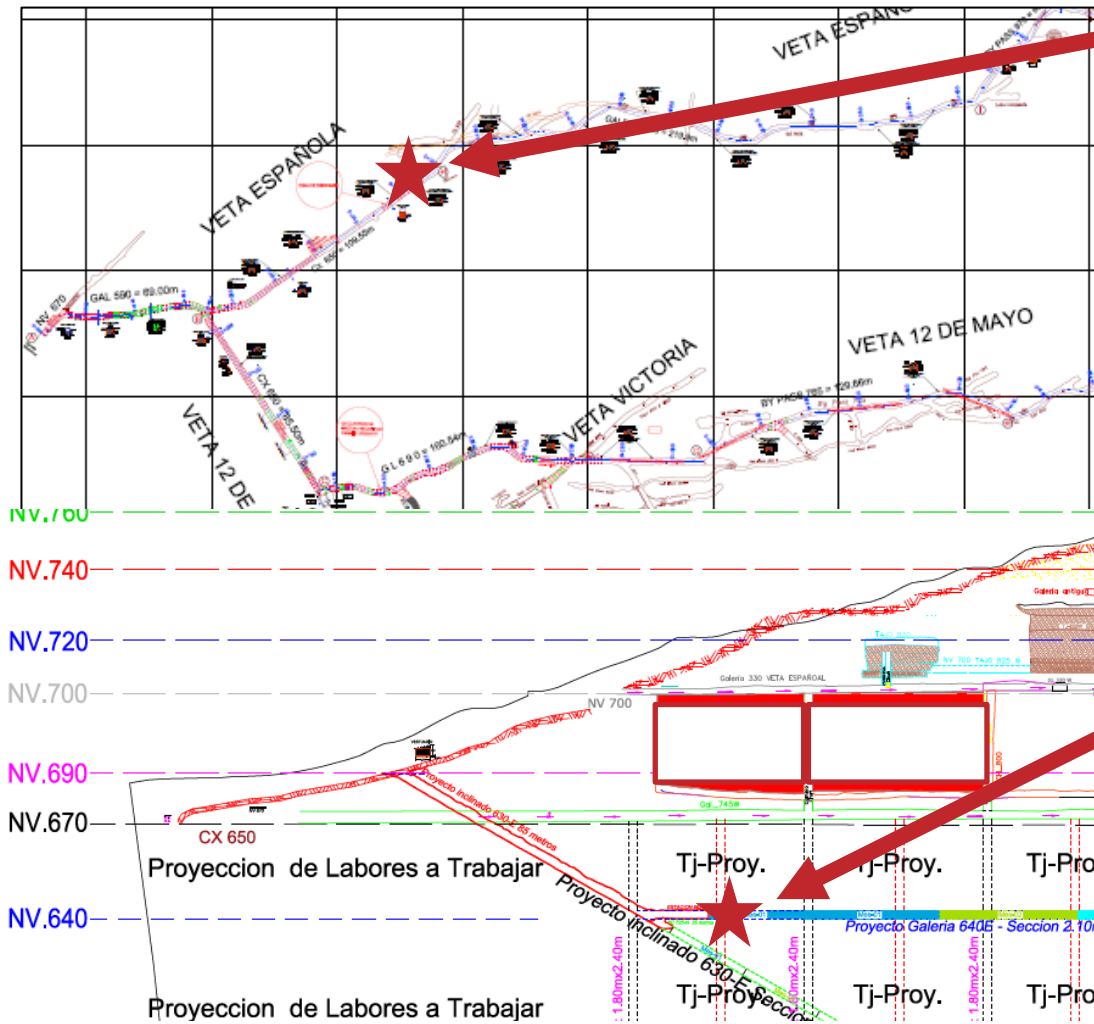
KUYASILVER | ESPAÑOLA VEIN PRODUCTION





FRONT 1: ESPAÑOLA LEVEL 640

Upper level in LVL 670



Production Front LVL 640



DEVELOPMENT & PRODUCTION TIMELINE

Underground reconditioning
Including:

- Galleries
- Declined
- Mining Cruise
- Mine raise



Production from the 3 main veins (12 de Mayo, Espanola and Victoria) and reaching 100tpd in the next 7 months



PHASE 1



PHASE 2

Phase 3

Phase 4



Completion of Rehabilitation and start of mine production at Espanola Vein Level 640



Start of the ramp up from 100tpd to 350tpd: Upgrading material handling system, ventilation expansion and increasing number of stopes.



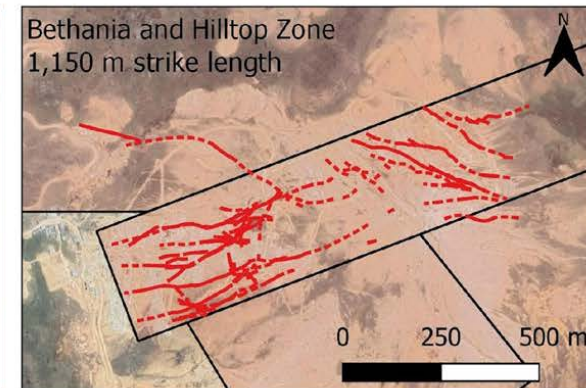
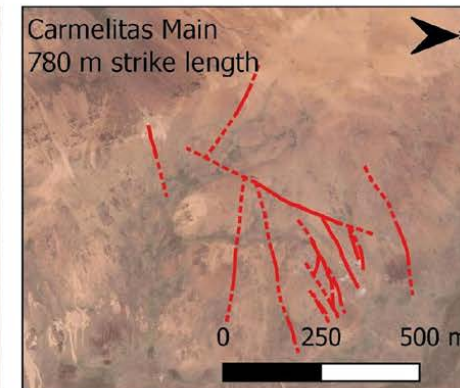
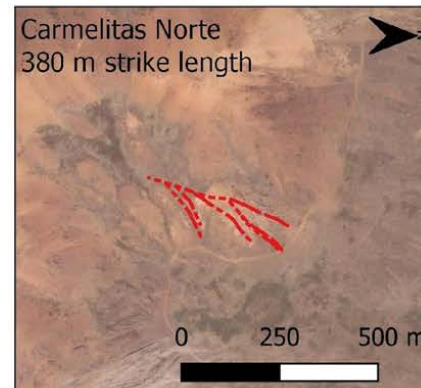
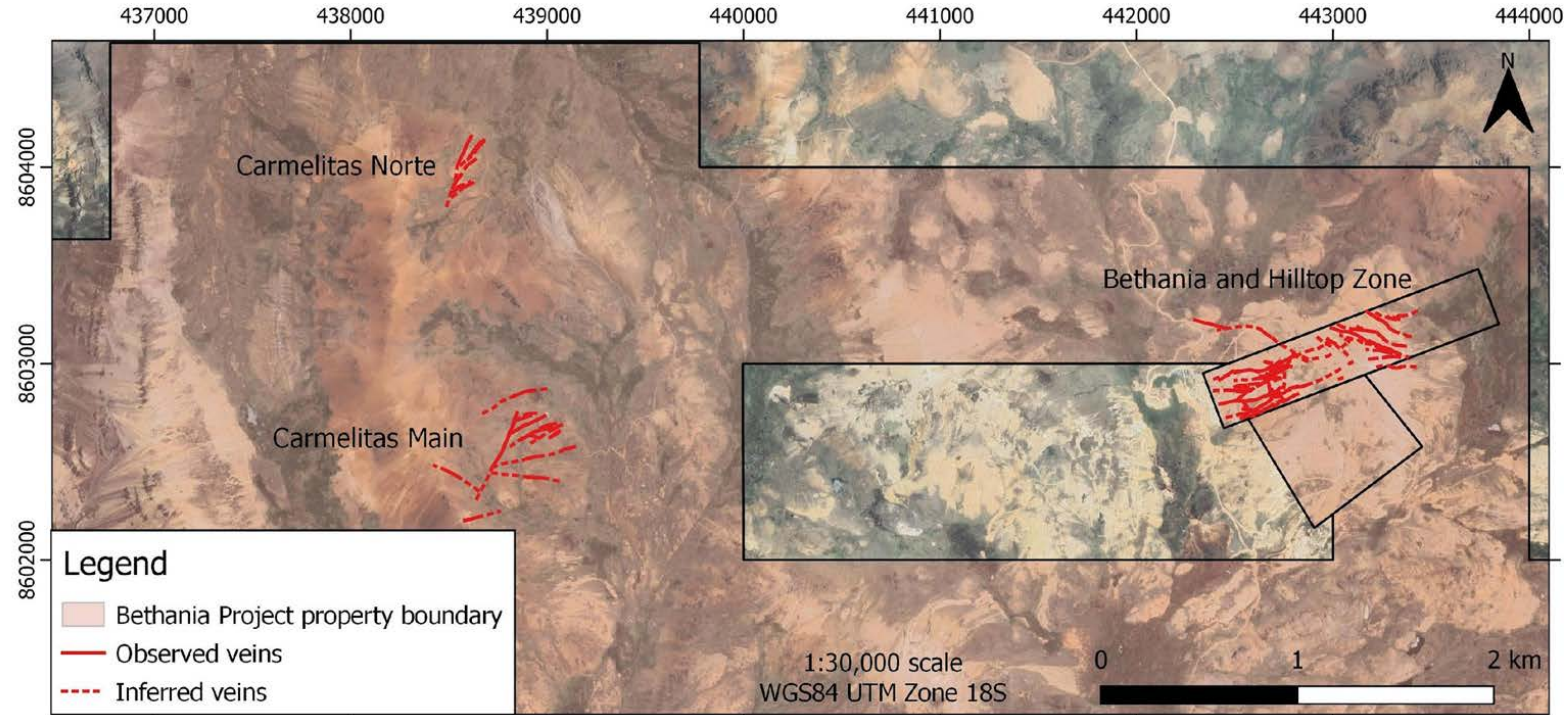
SIGNIFICANT GROWTH POTENTIAL

CARMELITAS PROPERTIES

Located ~3 km from the Bethania Mine.
Potential strike extension to high – grade silver-polymetallic vein system at Bethania

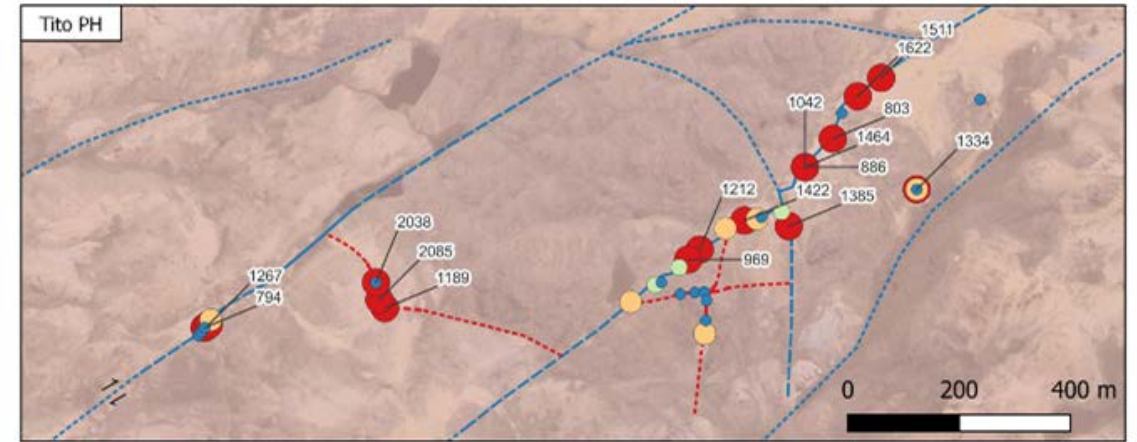
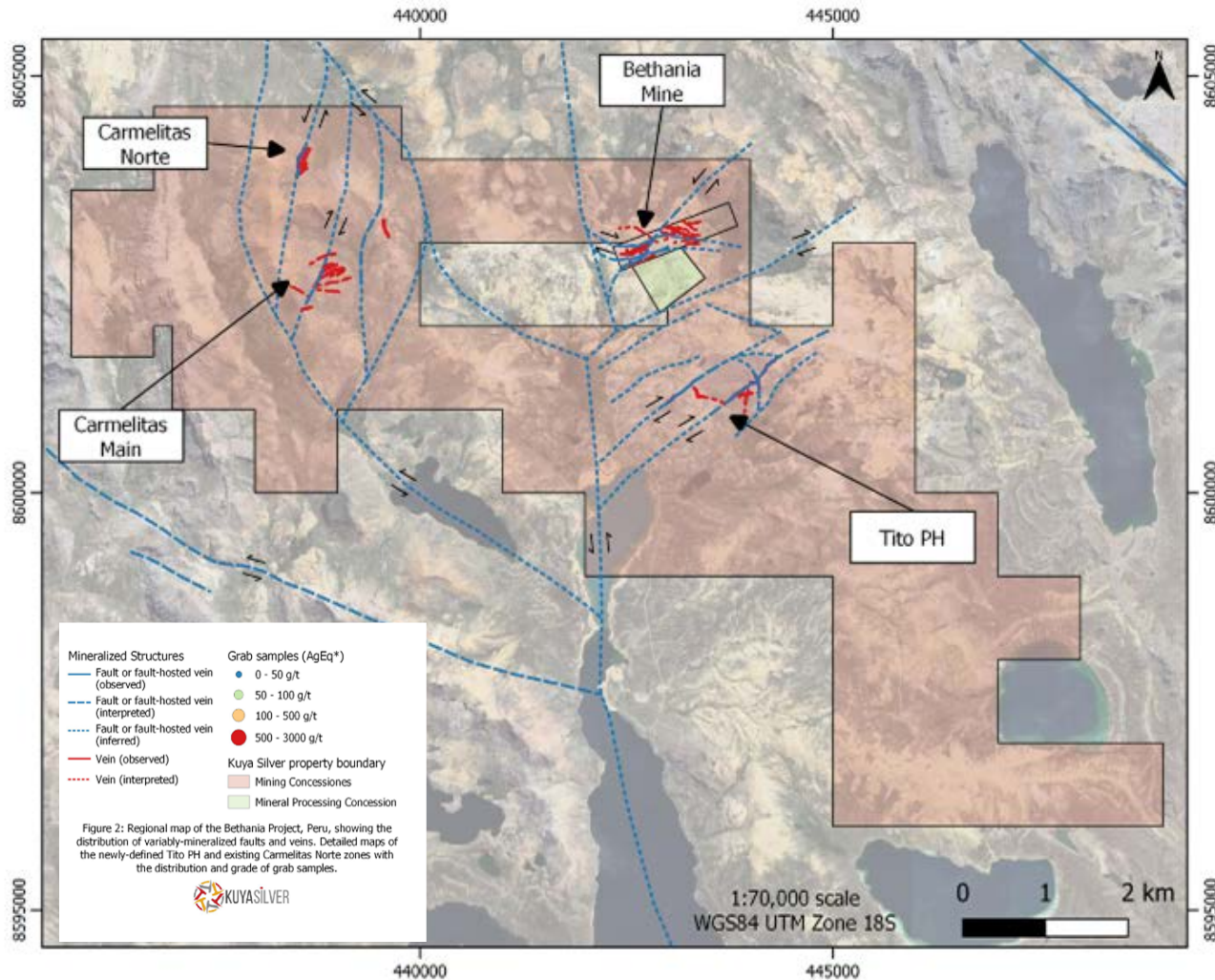
Combined strike length of mapped veins over 1.1km

Discovery of Carmelitas Norte prospect, highlighted by **1944 g/t AgEq.**





TITO PH - A NEW DISCOVERY SOUTH OF BETHANIA MINE



TITO PH TARGET

- Tito PH, is located 1.5 km south of the Bethania Mine and hosts at least 6 mineralized veins.
- **A single vein was traced for 630 m in length and remains open along strike:**
- Up to 2,085 g/t Ag Eq in samples with 12 of 39 reporting more than 1,000 g/t AgEq* and

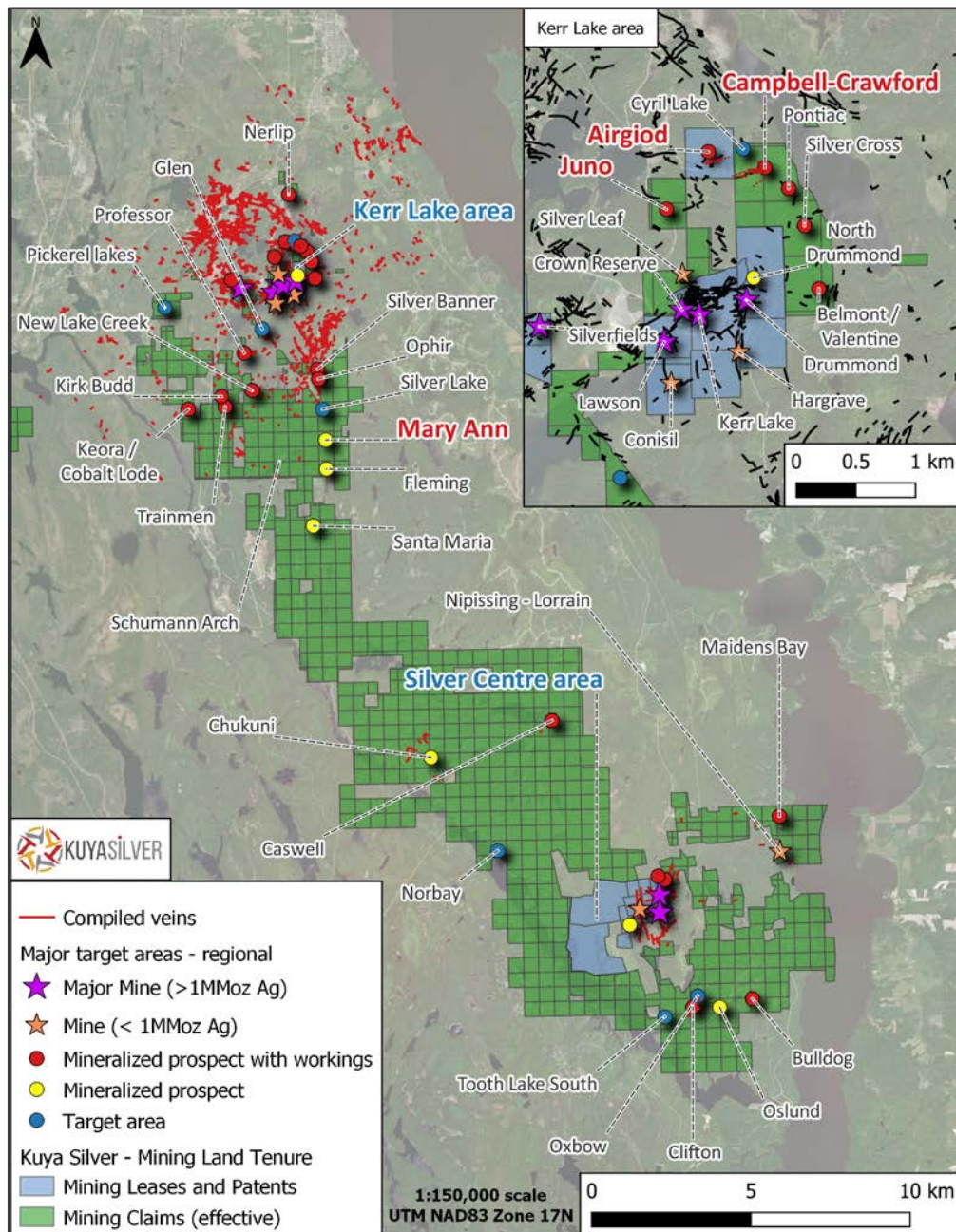
Tito PH appears to be comparable in size, grade and number of veins, with a similar structural setting to the Bethania Mine



THE SILVER KINGS PROJECT

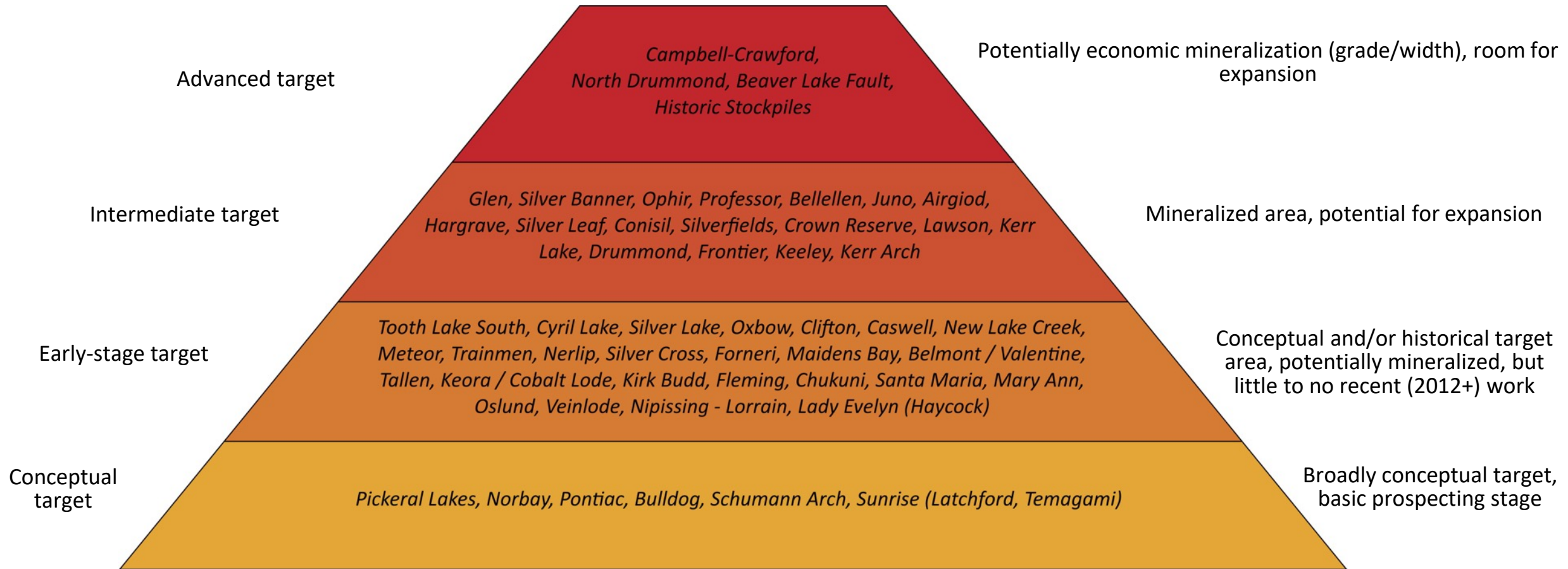
Silver Kings, Ontario

- The ~16,000 hectare land package in NE Ontario is located within the historic Cobalt, Ontario silver mining district
 - Approximately 1/6 of total silver production from the Cobalt and Silver Centre mining camps was produced from this consolidated property (96 / 550MM oz)
 - District has seen little to no exploration for silver over the past 40 years
 - Kuya geologists have identified dozens of explorations targets ranging from grassroots to NEW discovery at the Campbell Crawford Target, Kerr Lake Area .
 - Kuya holds a 100% interest in the Silver Kings properties



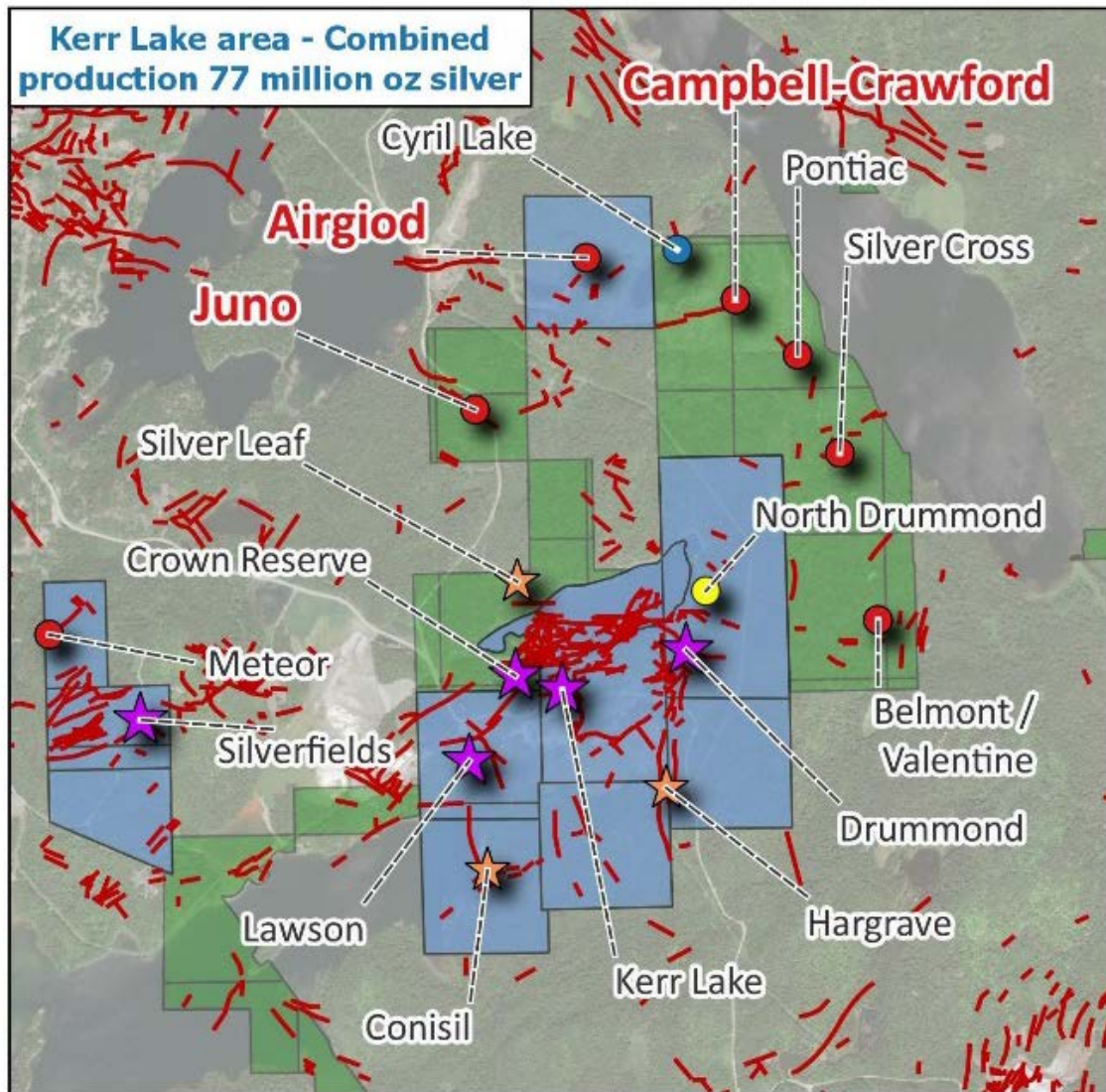


SILVER KINGS EXPLORATION TARGET PIPELINE





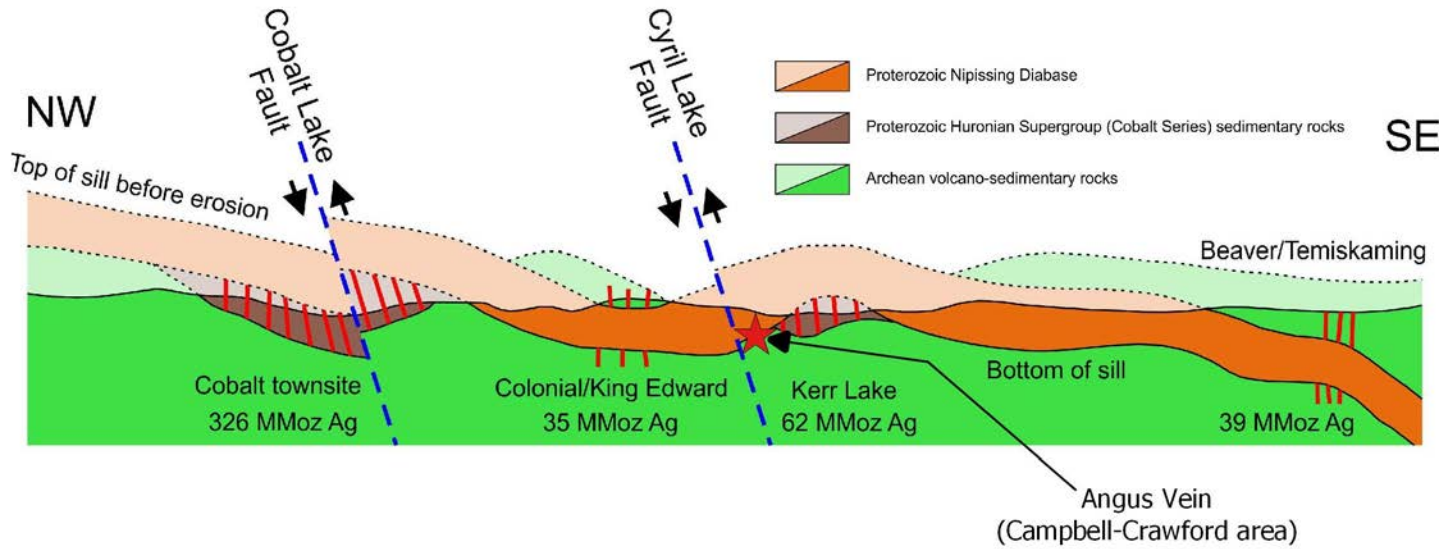
THE KERR DISTRICT AT SILVER KINGS



The Kerr District at Silver Kings

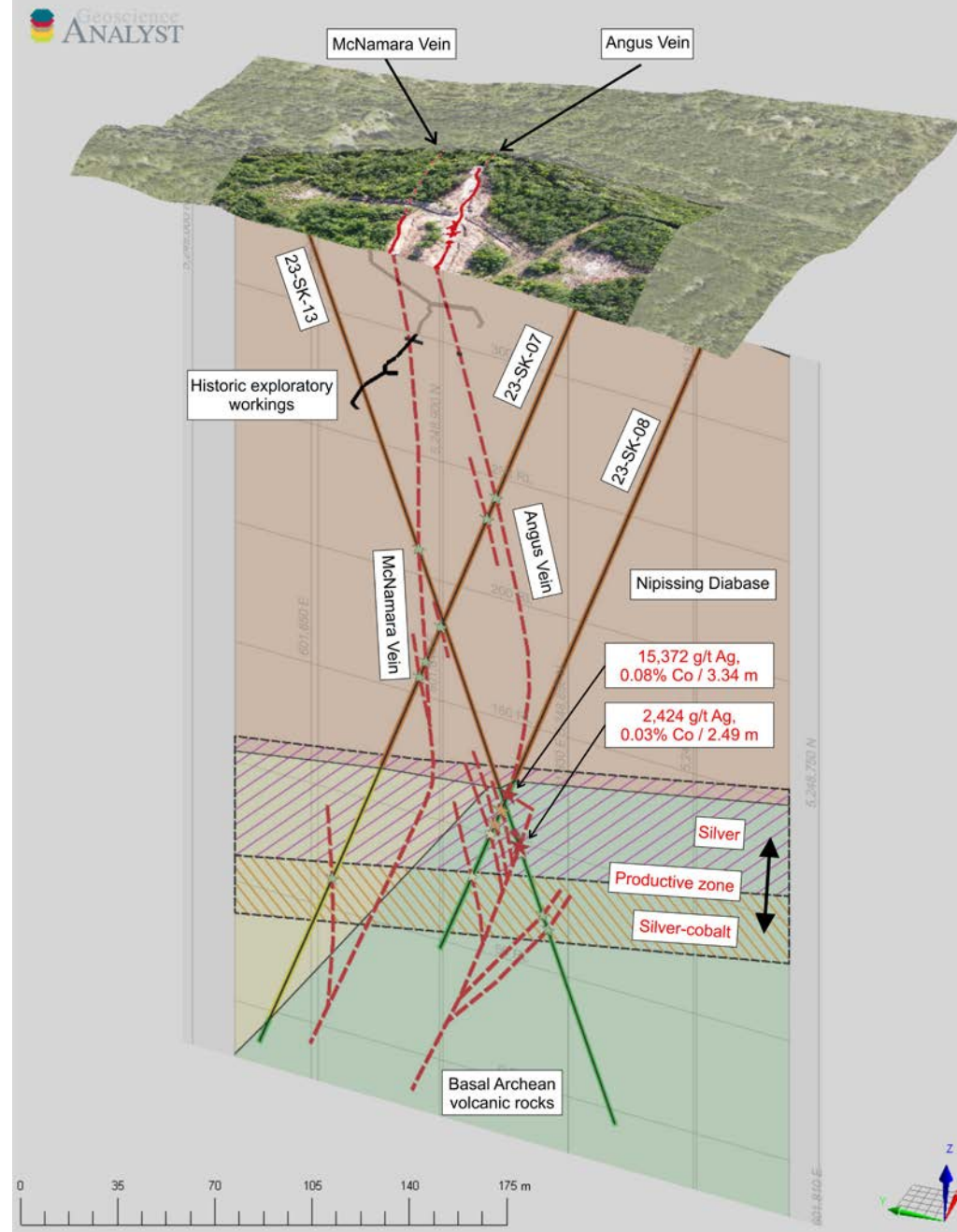
- Property Includes eight historic silver mines (*Crown Reserve, Silver Leaf, Kerr Lake, Drummond, Hargrave, Silverfields and others.*) on a contiguous 900+ hectare area.
 - Mines produced over 60 million ounces of silver between 1905 to 1950.
 - The deepest shaft in the region was less than 200 metres deep.
- Kuya Discovery of the Campbell-Crawford Area (shown in red) in March 2023.
- Kuya commenced a 6,000m phase 2 drill program in September 2023. The campaign was focused on expanding the Campbell-Crawford discovery.

ANGUS VEIN DISCOVERY



Phase 1 & 2 drilling at Campbell-Crawford intersected bonanza grade mineralization

- 15,372 g/t silver over 3.34 m (hole 23-SK-08)
- 2,424 g/t silver over 2.49 m (hole 23-SK-13)
- 2,180 g/t silver over 0.40 m (hole 23-SK-26)
- 12,200 g/t silver over 0.40 m (hole 23-SK-31)



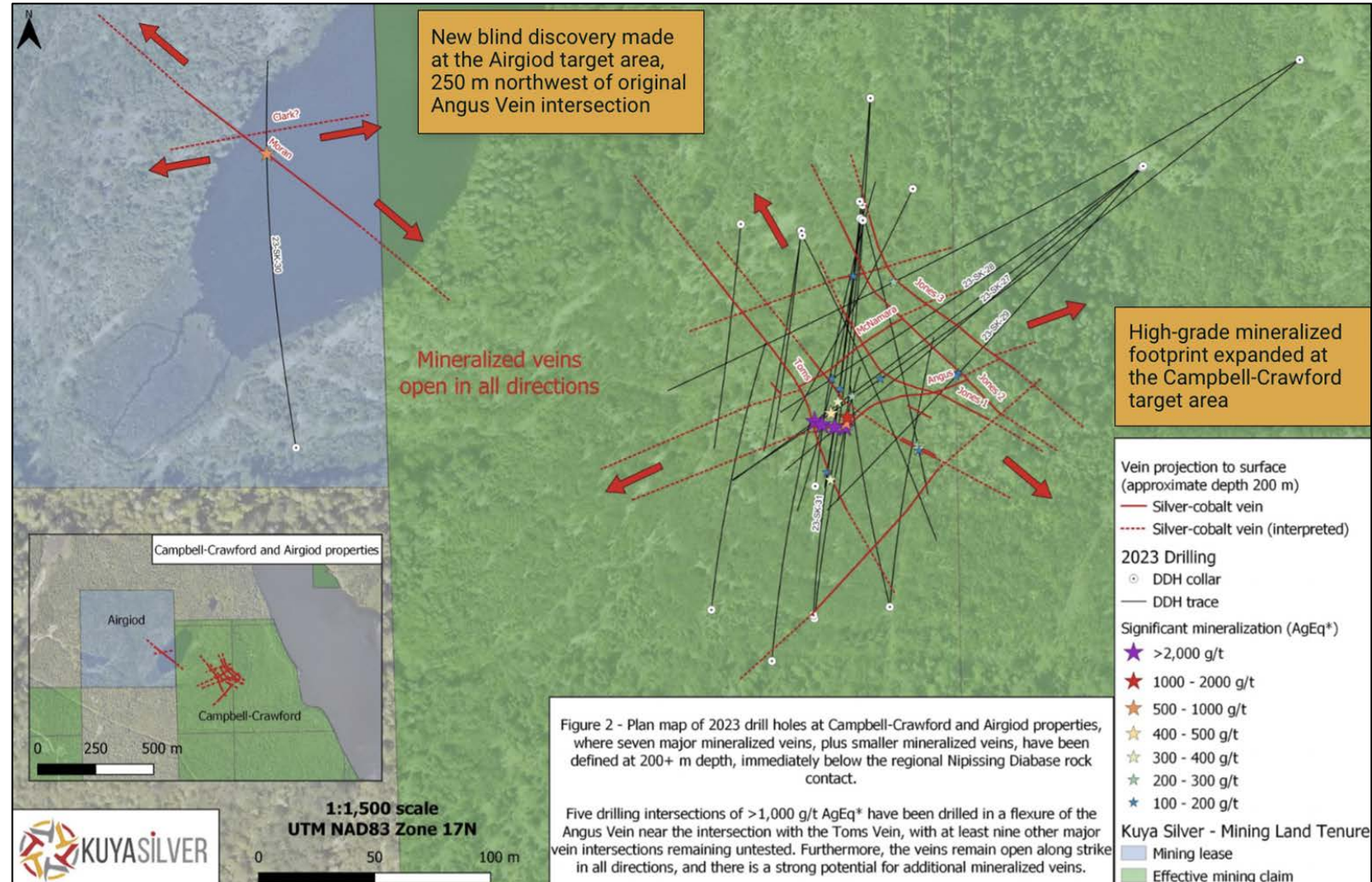
KUYASILVER | PHASE 2 DRILLING: CAMPBELL-CRAWFORD & AIRGIOD

A NEW Blind Discovery at the Airgiod Target Area

Moran Vein discovery made at the Airgiod target area, **250 m northwest of original Angus Vein intersection**

Drill hole intersected **249 g/t Silver, 1.64% Cobalt (863 g/t AgEq*)** over 0.40 m.

This is the first known drill hole in the Airgiod Property targeting the buried lower Nipissing Diabase contact





2 PROJECTS PERFECTLY SITUATED ALONG THE LASSONDE CURVE

Risks

Fluctuating commodity prices

Funding risk

Technical Risk

Exploration Risk

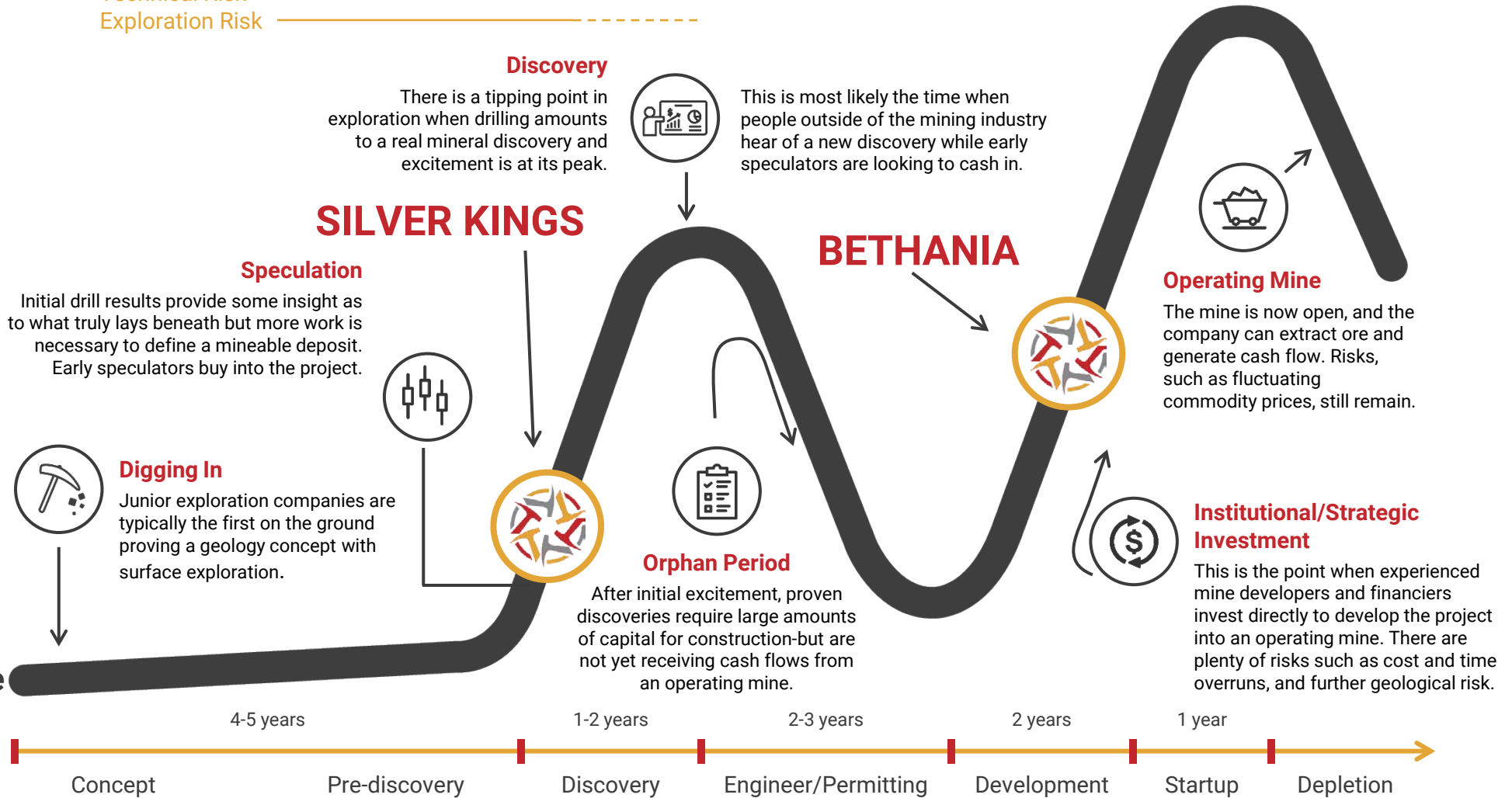
High Value



Low Value

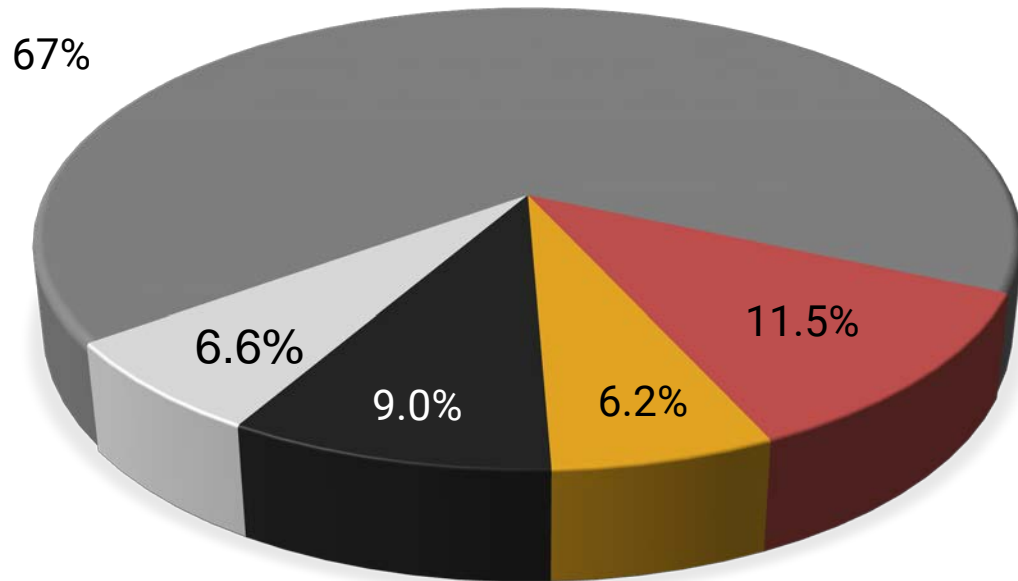
Life Cycle

Timeline





SHARE STRUCTURE



- Management
- Trafigura
- Advisory Team
- Public Float/Other
- Crescat

Shares Outstanding	98,630,155
Market Capitalization (May 2nd, 2024)	~C\$38.5 Million
Warrants	39,318,571
Options and RSUs	4,497,300
Fully Diluted	142,446,026
Significant Shareholders	
Management	11.5%
Kuya Advisory Team	6.2%
Crescat Capital	9.0%
Trafigura	6.6%
Other Large Shareholders <5%	
Eric Sprott	
Ninepoint Partners	
RAB Capital	



MANAGEMENT & DIRECTORS

David Stein, MSc (Geo), CFA

President and CEO, Director

Mr. Stein founded Kuya Silver in 2017 to acquire the Bethania Silver Mine and develop the next silver mining company. Mr. Stein has spent most of his 20-year career in mining investments, first as a sell-side analyst and more recently as an investment manager.

Christian Aramayo, MSc (Eng), CEng

Chief Operating Officer, Director

Mr. Aramayo is a UK-educated Peruvian engineer, previously worked on global projects for Kinross before starting his own mining consultancy. Based in Lima, Peru, Mr. Aramayo manages Kuya's technical team for engineering and planning in addition to accessing a deep network in South America and globally.

David T. Lewis, MSc (Geo), PGeo

VP Exploration

Mr. Lewis has over 20 years experience managing and operating mineral exploration programs in a variety of settings, including Northern Ontario, as has been with Kuya since 2021. Mr. Lewis also teaches Structural Geology at Fleming College and obtained a BSc. In Geological Sciences from U. of Saskatchewan and MSc. from Laurentian University.

Stephen Peters

Chief Financial Officer

Mr. Peters is a Chartered Professional Accountant with more than 30 years of corporate accounting experience in financial services and more recently in natural resources. Mr. Peters is currently an advisor with HIVE Advisory – a boutique financial advisory firm, and prior to that he served as the CFO for the Royal Bank of Scotland (Canadian operations).

Tyson King

VP Corporate Development

Mr. King has over 10 years experience in the management of publicly trading and privately held companies within the commodities and natural resources sector. He has been actively engaged in overseeing the day-to-day operations of several companies where he's held various senior officer positions throughout his career. Mr. King holds a BA in Economics from the University of Calgary.

Maura Lendon, LLB, MBA, LLM

Chair of the Board

Ms. Lendon, is a seasoned, internationally-experienced general counsel with over 20 years' experience in the mining and telecom industries gained after initially practicing with top Bay Street law firms. Ms. Lendon is the founder and Chief General Counsel of Scalable General Counsel, providing general counsel services to growing companies since 2019, and is currently a director of Eastmain Resources Inc. Previously, she was Chief General Counsel and Corporate Secretary of Primero Mining from 2012 to 2018.

Javier Del Rio, MBA

Director

Mr. Del Rio is a Peruvian mining executive with over 30 years of experience in the mining industry in both corporate and business unit roles and in open-pit, underground and expansion initiatives. Currently, as Senior VP South America and USA for Hudbay Minerals Inc., he is responsible for the strategic and operational performance of the business units located in Peru, Arizona and Nevada, which also includes executive oversight of human and capital resources, environmental management, health and safety performance and community relations.

Andres Recalde

Director

Mr. Recalde is the Director of Mining for Common Good. His expertise is with social performance and building stakeholder confidence for the extractive industries. Mr. Recalde is Peruvian/Canadian and has worked extensively all over Latin America as a consultant, advisor and corporate director to mining companies such as Barrick Gold, Pan American Silver and Torex Gold.

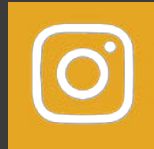
Dale Peniuk, CPA, CA

Director

Mr. Peniuk is a Chartered Professional Accountant (CPA, CA) and corporate director. Mr. Peniuk has a B.Comm from the University of British Columbia (1982) and received his Chartered Accountant designation from the Institute of Chartered Accountants of British Columbia. Mr. Peniuk also serves as a director and Audit Committee Chair of Lundin Mining Corporation, Capstone Mining Corp. and Argonaut Gold Inc



@KuyaSilver



KuyaSilverCorp



Follow Kuya Silver



Kuya-Silver

Email our team at
info@kuyasilver.com for more
information

| BETHANIA PEA: HIGHLIGHTS



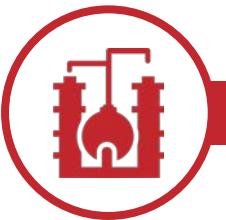
Value:

- Base case (\$25.40/oz silver price) Pre-Tax NPV (5%) of \$77.8 Million and **IRR of 227%**
- Base case (\$25.40/oz silver price) After-Tax NPV (5%) of \$54.7 Million and **IRR of 188%**
- After-tax cash flow of **\$18.04 Million in first full year of production** (base case)
- Life of Mine (“LOM”) **after-tax free cash flow of \$65.3 Million** (base case)



Cost:

- Initial Capital Cost Estimated at **\$14.2 Million** plus 25% contingency of \$3.6 Million
- All-In Sustaining Costs of **\$10.48/oz silver eq.** in first year, **\$12.15/oz silver eq. over LOM**



Production (Bethania Facility):

- **Silver production of 1.37 Million oz eq. in first year**, 8.68 Million oz eq. over LOM
- Production (head) grade of **13.8 oz/t (or 429 g/t) silver eq.** in pre-production year, 10.1 oz/t (or 315 g/t) silver eq. over LOM

Production (Toll Milling):

- **Pre-production toll milling option would generate gross margin of \$9.5 Million during construction at base case, would accelerate after-tax payback period to 0.50 years**

Note: See the Amended and Restated Bethania PEA (October 2023) Report for further details.

 | **ADVISORY TEAM****Dr. Quinton Hennigh**

Geologic Advisor (Exploration Strategy)

Dr. Hennigh is an economic geologist with more than 25 years of exploration experience with major gold mining firms, including Homestake Mining, Newcrest Mining and Newmont Mining. Currently, Dr. Hennigh is Geologic and Technical Director for Crescat Capital LLC and serves as Non-executive Chairman of Novo Resources, and is a Director of New Found Gold and Irving Resources Inc.

Erika Soria

Advisor (Logistics/Business Development)

Ms. Soria is the former owner of the Bethania Mine and now the Founder and Principal of Cima Nevada S.A.C., a Peru-based mining services company. She assists Kuya with commercial and administrative affairs of the Bethania mine and is a liaison with the local community. She is also well-connected in the Peruvian mining community and sources new opportunities for Kuya.

Hector Aramayo

Technical Advisor (Construction/Engineering)

Mr. Aramayo, based in Lima, Peru, is an experienced civil engineer, consultant and project manager with experience in retail and industrial construction in Latin America. He is the Founder of SICG SAC, a construction contractor and management company that over the past 20+ years has built blue chip client base in Latin America.

Bethania PEA Key Parameters

1. The Bethania PEA envisages a 350-tonne-per-day (“tpd”) conventional cut and fill underground mine feeding a concentration plant that would process mineralized material at the same rate (126,000 tonnes per year) over a mine life of 6.5 years. The Bethania PEA recognizes the potential to toll-mill mineralized material during the final six months of plant construction (the “Toll-Milling Option”), and this has been modelled as the base case.
2. The Mineral Resource estimate on which the Bethania PEA is based was prepared in accordance with the CIM Standards and the CIM Best Practice Guidelines. A cut-off grade of 100 g/t silver equivalent was applied in the reporting of the resource model. The cut-off was determined as an approximate break-even cost calculated from known historical mining and recovery costs.
3. Based on historical metallurgical testing and subsequent analysis, average recoveries for various metals are modelled in the Bethania PEA to be Silver 92%, Lead 90%, Zinc 81%, Copper 64%, and Gold 34%.
4. For the Bethania PEA base case, the following metal price assumptions were used: Silver \$25.40/oz, Gold \$1850/oz, Zinc \$1.21/lb, Lead \$0.90/lb, and Copper \$3.62/lb. The price of silver has been highly volatile over the past two years, making it challenging to select an appropriate price for the purpose of the Bethania PEA, but the Company considers \$25.40/oz to be a reasonable base case under the circumstances. Since the beginning of 2021, the closing daily price of silver has ranged between \$21.49 and \$29.42, and the price of silver exceeded \$26.00/oz as recently as April 18, 2022. Further, the pricing assumptions used in the Bethania PEA for zinc and lead are conservative, which moderates or counterbalances the economic effect of the base case pricing assumption for silver. Finally, on the slide titled “Bethania – Robust IRR and Payback,” the economics of the Bethania Project are summarized using a range of pricing assumptions for silver, including assumptions equal to 80% and 90% of the base case.
5. In addition to what is noted in this appendix and elsewhere in the presentation, the Bethania PEA is based on various assumptions relating to technical, economic, financial, tax, regulatory, and operational matters, including but not limited to the assumptions identified in the news release titled “Kuya Silver Announces Filing of Amended and Restated Technical Report” issued on October 20, 2023, which is available under the Company’s SEDAR profile at www.sedar.com.

Other Notes

1. This presentation refers to all-in sustaining costs per silver equivalent ounce produced (“AISC”). AISC is a non-GAAP financial performance measure that does not have any standardized meaning under IFRS and therefore may not be comparable to similar measures presented by other issuers. AISC consists of direct operating costs (mining, processing, tailings and waste rock disposal, and site G&A) plus treatment and refining costs (including penalties), government royalties, community participation, and sustaining capital expenditures. The Company believes that AISC provides further transparency into costs associated with producing silver and will assist analysts, investors, and other stakeholders of the Company in assessing the Bethania Project. AISC is intended to provide additional information only and should not be considered in isolation or as a substitute for measures of performance prepared in accordance with IFRS.
2. Due to rounding, certain amounts in this presentation may not add exactly to the total shown.