



CSE: KUYA | OTCQB: KUYAF | FRA: 6MR1

Share Structure

Shares Outstanding:	45,279,981
Fully Diluted:	49,863,806
Market Capitalization:	C\$45,399,000*

Significant Shareholders

Management:	21.6%
Kuya Advisory Team:	11.7%

Building the Next High - Margin Silver Mining Company

Kuya's Bethania Overview:

- Bethania Mine is a high-grade silver project with historic production grades of ~650 g/t Ag eq
- 5,300 ha district-scale land package with multiple high priority targets including the Carmelita Prospect
- Maiden Resource, from 5,000m of drilling and underground sampling, announced in January 2022:
 - Indicated resources of 5,858,521 oz silver equivalent at an average grade of 451 g/t Ag eq
 - Inferred resources of 8,006,431 oz silver equivalent at an average grade of 356 g/t Ag eq
 - 63% of Indicated Silver Equivalent Resource Estimate Located Above Historical Production Adit (4670 Level)
 - Resource model extends to a maximum depth of 230m. Veins are open along strike and at depth
- New Santa Elena vein discovery of 91.1 oz/t Ag - 600m along strike (at surface)
- 100% ownership - No royalties or streams

Expanding and Optimizing the Bethania Silver Mine in Peru – A Commitment to Low-Cost, Sustainable Silver Mining.

Kuya is a publicly-traded, silver-focused mining company that owns the Bethania Project, which includes the Bethania Silver mine, located in Central Peru. The Bethania mine was in production until 2016, toll-milling its high - grade ore at various other concentrate plants in the region. The Company's plan is to unlock value at the mine by expanding and constructing a 350tpd concentrate plant at site, before restarting operations in 2022.

350 tpd

Concentrate Plant at Site

5,300 ha

District-Scale Land Package

* As of February 10th, 2022





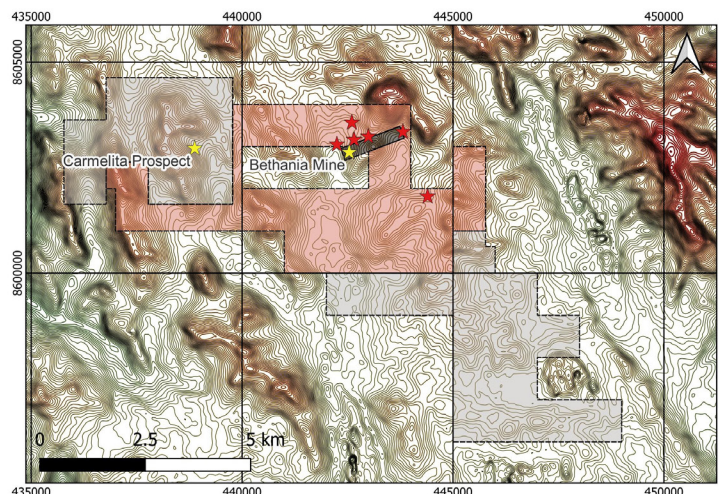
CSE: KUYA | OTCQB: KUYAF | FRA: 6MR1

Share Structure

Shares Outstanding:	45,279,981
Fully Diluted:	49,863,806
Market Capitalization:	C\$45,399,000*

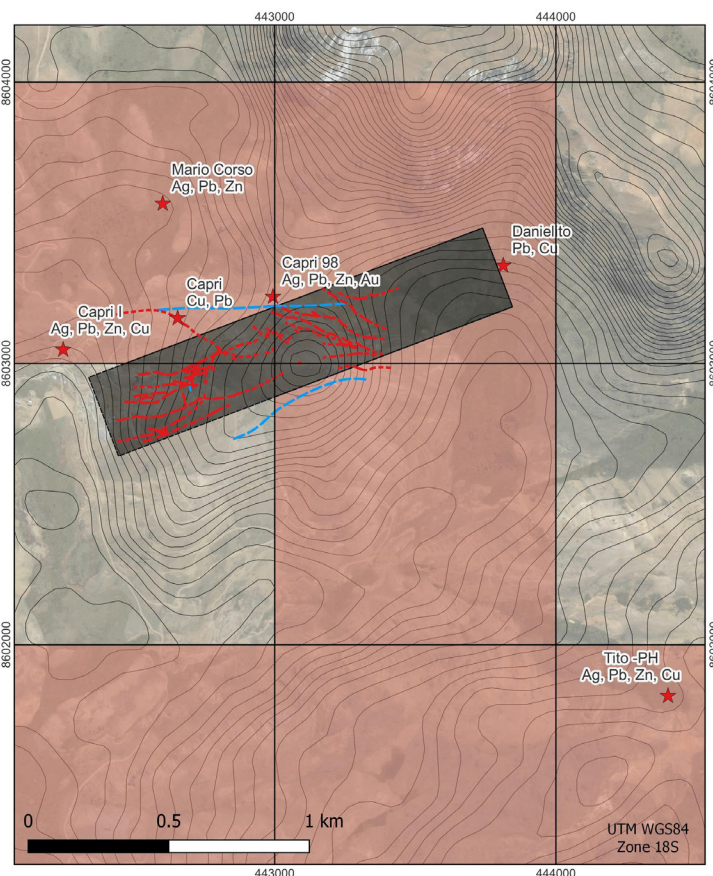
Significant Shareholders

Management:	21.6%
Kuya Advisory Team:	11.7%



Legend

- ★ Kuya Silver project area
- ★ Ingemmet mineral occurrences
- Kuya Silver Properties
 - Newly acquired
 - Santa Elena Concession
 - Existing Concessions
- Structures
 - Defined vein
 - - - Inferred vein
 - Fault
- Elevation (ASL)
 - 5210 m
 - 4650 m
 - 4090 m



Further Growth Potential - Silver Kings Project, Ontario (Canada)

The Silver Kings Project is located in Northern Ontario's most prolific silver mining camp, situated near the historic mining town of Cobalt, Ontario. The Project encompasses 10,000-hectare and consists of both Kuya's 100%-owned Kerr Project along with the Silver Kings Joint Venture that Kuya has entered into with First Cobalt Corp.

The Kerr Property at Silver Kings Includes eight historic silver mines (Crown Reserve, Silver Leaf, Kerr Lake, Drummond, Hargrave, Silverfields and others) on a contiguous 900-hectare area.

- 🌀 Mines produced over 50 million ounces of silver between 1905 to 1950.
- 🌀 The deepest shaft was less than 200 metres deep.
- 🌀 System remains untested at depth

* As of February 10th, 2022

